

# Jewel Stone Plus/Quartz

Decorative Overlay System

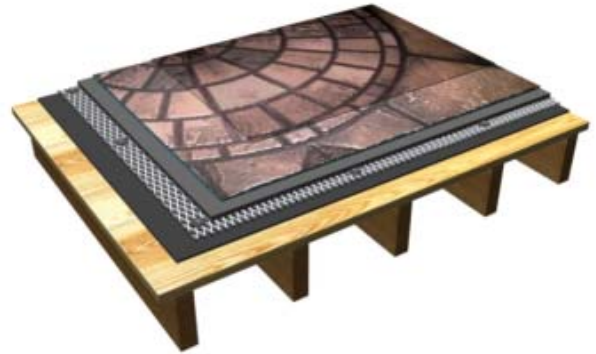
## Jewel Stone

For Concrete Surface



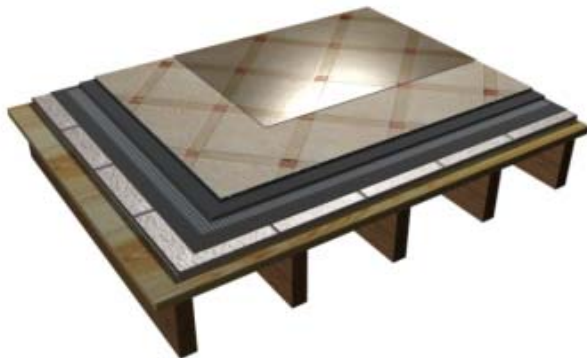
## Jewel Stone Plus

For Plywood Sub-Flooring



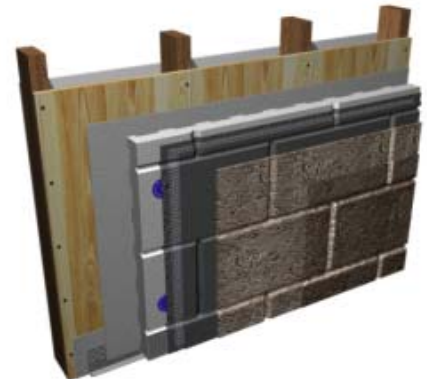
## Jewel Stone Quartz

For Existing Ceramic Tiles



## Jewel Stone Plus

Over DuROCK EIFS



SUBSTRATE	BASE COAT			FINISH COAT		COLOR OPTIONS	USE
	WET MIX	DRY MIX	REINFORCING	WET MIX	DRY MIX		
CONCRETE (Horizontal & Vertical)	Pure Cement Binder	Jewel Stone Regular	Not required	Pure Cement Binder	Jewel Stone Regular	Integral or Color Wash	Moderate Pedestrian Traffic
WOOD SUBFLOORING <sup>1</sup>	Jewel Stone Plus Binder	Jewel Stone Plus	Metal Lath	Pure Cement Binder	Jewel Stone Regular	Integral or Color Wash	Moderate Pedestrian Traffic
CERAMIC TILE <sup>1</sup>	Jewel Stone Quartz Binder	Jewel Stone Quartz	Fibre Mesh	Jewel Stone Quartz	Jewel Stone Quartz	Integral or Color Wash	Moderate Pedestrian Traffic
DuROCK EIFS <sup>2</sup>	DuROCK Prep Coat	Portland Cement	Fibre Mesh	Jewel Stone Plus Binder	Jewel Stone Plus	Color Wash	Walls only

Notes: 1, Two base coats are required of Jewel Stone Plus/Quartz on metal lath and fibre mesh.

2, DuROCK EIFS can utilized Jewel Stone Plus as the base coat when used on combustible construction.

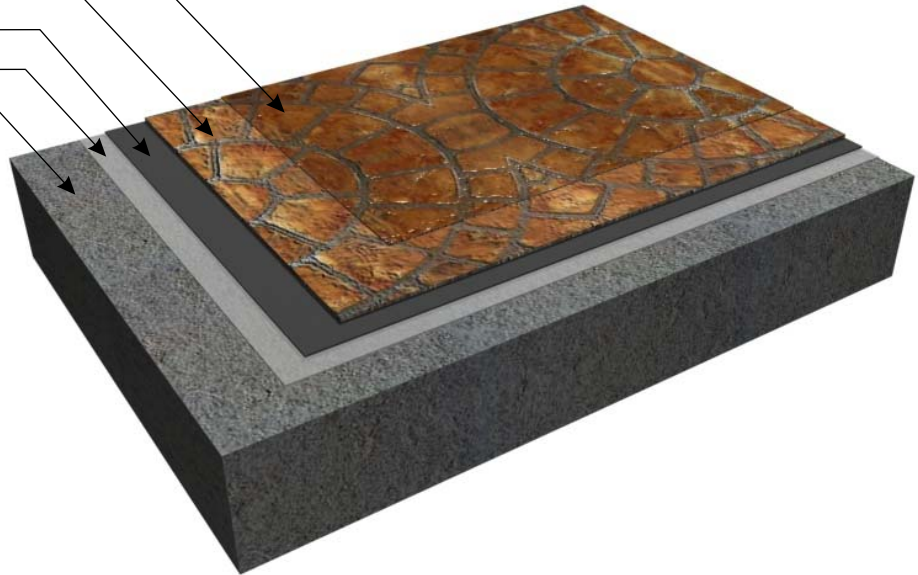
# Jewel Stone

Decorative Concrete Overlay Finish Systems

## Jewel Stone

Over Concrete Floor Surface

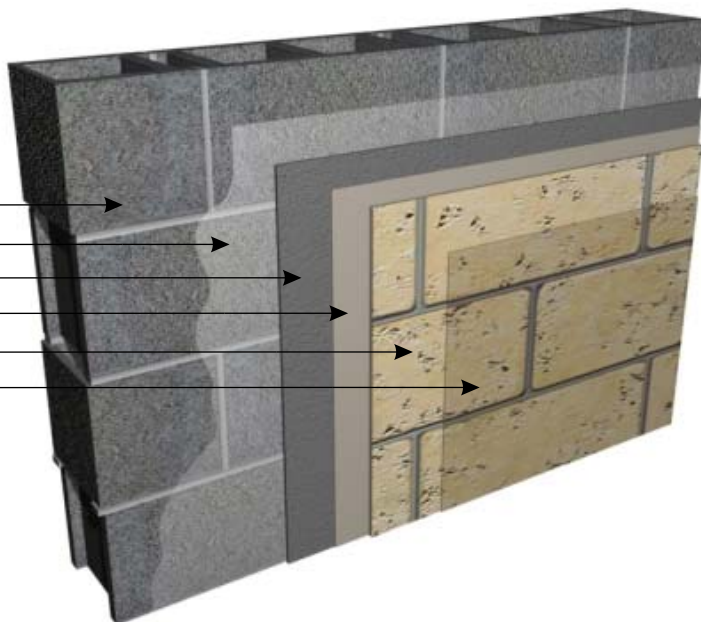
- DuROCK Approved Sealer
- Jewel Stone Finish Coat
- Jewel Stone Base Coat
- Jewel Prime Coat
- \* Concrete Surface



## Jewel Stone

Over Concrete Block Wall

- \* Concrete Block Wall
- Jewel Prime Coat
- One-Step Parge
- Jewel Stone Base Coat
- Jewel Stone Finish Coat
- DuROCK approved Sealer



(\*by others)

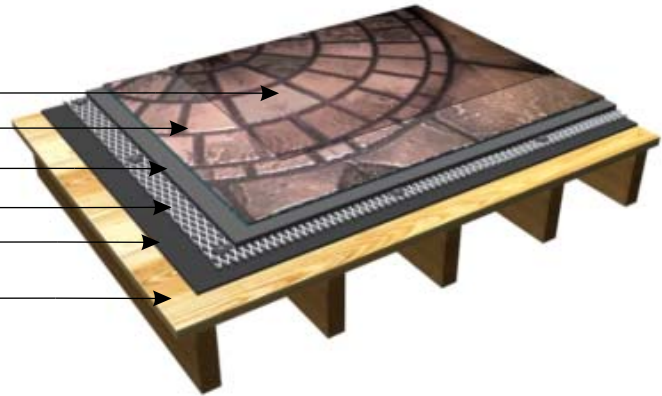
# Jewel Stone Plus/Quartz

## Decorative Overlay System

### Jewel Stone Plus

#### Over Plywood Sub-Flooring

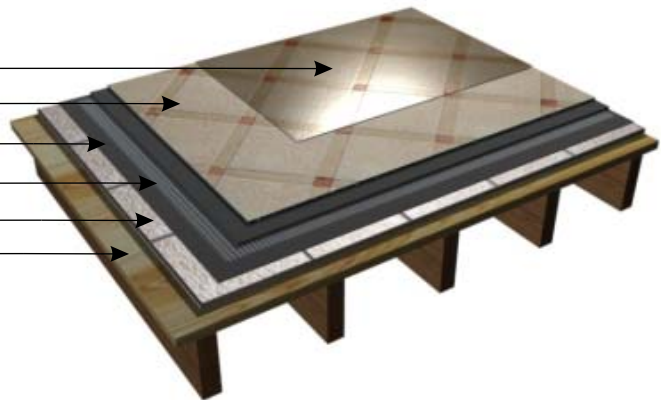
- DuROCK Approved Sealer
- Jewel Stone Finish Coat
- Jewel Stone Plus Base Coat
- Self-Furring Metal Lath
- Water Proof Membrane  
(for exterior applications only)
- \* Plywood Substrate



### Jewel Stone Quartz

#### Over Existing Ceramic Tiles

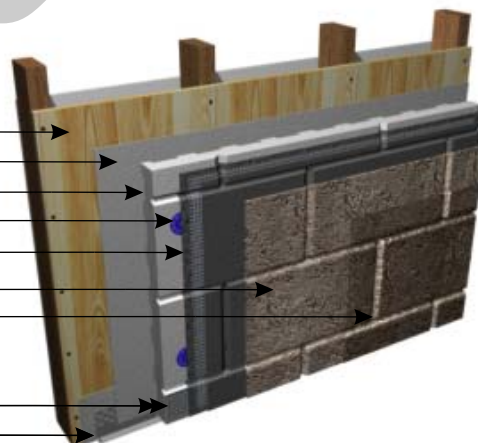
- DuROCK Approved Sealer
- Jewel Stone Quartz Finish Coat
- Jewel Stone Quartz Base Coat
- DuROCK Fibre Mesh embedded in Base Coat
- \* Existing Tile Floor
- \* Plywood Substrate



### Jewel Stone Plus

#### Over DuROCK EIFS

- \* Plywood Substrate
- DuROCK Polar Bear
- EIFS Insulation Board (Manually Carved)
- Mechanical Fastener
- DuROCK Fibre Mesh embedded in Base Coat
- Jewel Stone Plus Finish Coat
- DuROCK approved sealer
- Backwrapped Starter Mesh
- DuROCK Uni-Track



(\*by others)